

Upper Seminole Well Field Road Repairs

Site 1: Gravel Road in the Well Field
Damage: Water Division asserts that road stone was scoured during the flood and when sand was cleared from the roadway
Starting: 42.008385 -91.744812 Near Well #22
Ending: 42.006512 -91.744453 Near Well #21

Base Material: Possibly 2 inch Clean
Length: 675 feet
Width: 15 feet
Depth: 2 inch
Volume: 62.50 cubic yards
Amount: 87.50 tons (1.4 conversion rate)

Surface Material: Possibly 2 inch Minus
Length: 675 feet
Width: 15 feet
Depth: 2 inch
Volume: 62.50 cubic yards
Amount: 87.50 tons (1.4 conversion rate)



Upper Seminole Well Field Road Repairs

Site 2: Gravel Road in the Well Field

Damage: Water Division asserts that road stone was scoured during the flood and when sand was cleared from the roadway

Starting: 42.005135 -91.744087 Near Well #20

Ending: 42.004097 -91.742882 Near Well #19

Base Material: Possibly 2 inch Clean

Length: 470 feet

Width: 15 feet

Depth: 2 inch

Volume: 43.52 cubic yards

Amount: 60.93 tons (1.4 conversion rate)

Surface Material: Possibly 2 inch Minus

Length: 470 feet

Width: 15 feet

Depth: 2 inch

Volume: 43.52 cubic yards

Amount: 60.93 tons (1.4 conversion rate)



Upper Seminole Well Field Road Repairs

Site 3: Gravel Road in the Well Field
Damage: Water Division asserts that road stone was scoured during the flood

Site 3a: Gravel Road in the Well Field
Starting: 42.003853 -91.741806 South of Well #19
Ending: 42.003735 -91.741299 Near Well #18

Base Material: Possibly 2 inch Clean
Length: 175 feet
Width: 15 feet
Depth: 2 inch
Volume: 16.20 cubic yards
Amount: 22.69 tons (1.4 conversion rate)

Surface Material: Possibly 2 inch Minus
Length: 175 feet
Width: 15 feet
Depth: 2 inch
Volume: 16.20 cubic yards
Amount: 22.69 tons (1.4 conversion rate)

Site 3b: Gravel Road in the Well Field
Starting: 42.003735 -91.741299
Ending: 42.003596 -91.739821

Base Material: Possibly 4 inch Clean
Length: 400 feet
Width: 15 feet
Depth: 4 inch
Volume: 74.07 cubic yards
Amount: 103.70 tons (1.4 conversion rate)

Surface Material: Possibly 2 inch Minus
Length: 400 feet
Width: 15 feet
Depth: 2 inch
Volume: 37.04 cubic yards
Amount: 51.85 tons (1.4 conversion rate)

Site 3c: Gravel Road in the Well Field
Starting: 42.003735 -91.741299
Ending: 42.003609 -91.739464

Base Material: Possibly 2 inch Clean
Length: 150 feet
Width: 15 feet
Depth: 2 inch
Volume: 13.89 cubic yards
Amount: 19.44 tons (1.4 conversion rate)

Surface Material: Possibly 2 inch Minus
Length: 150 feet
Width: 15 feet
Depth: 2 inch
Volume: 13.89 cubic yards
Amount: 19.44 tons (1.4 conversion rate)

Upper Seminole Well Field Road Repairs

Site 3: Gravel Road in the Well Field



Upper Seminole Well Field Road Repairs

Site 4: Gravel Road in the Well Field
Damage: Water Division asserts that road stone was scoured during the flood

Site 4a: Gravel Road in the Well Field

Starting: 42.003479 -91.738800

Ending: 42.003440 -91.738158

Base Material: Possibly 2 inch Clean

Length: 175 feet

Width: 15 feet

Depth: 2 inch

Volume: 16.20 cubic yards

Amount: 22.69 tons (1.4 conversion rate)

Surface Material: Possibly 2 inch Minus

Length: 175 feet

Width: 15 feet

Depth: 2 inch

Volume: 16.20 cubic yards

Amount: 22.69 tons (1.4 conversion rate)

Site 4b: Gravel Road in the Well Field

Starting: 42.003440 -91.738158

Ending: 42.003368 -91.737290

Base Material: Possibly 4 inch Clean

Length: 225 feet

Width: 15 feet

Depth: 4 inch

Volume: 41.67 cubic yards

Amount: 58.33 tons (1.4 conversion rate)

Surface Material: Possibly 2 inch Minus

Length: 225 feet

Width: 15 feet

Depth: 2 inch

Volume: 20.83 cubic yards

Amount: 29.17 tons (1.4 conversion rate)

Site 4c: Gravel Road in the Well Field

Starting: 42.003368 -91.737290

Ending: 42.003334 -91.735587

Base Material: Possibly 2 inch Clean

Length: 175 feet

Width: 15 feet

Depth: 2 inch

Volume: 16.20 cubic yards

Amount: 22.69 tons (1.4 conversion rate)

Surface Material: Possibly 2 inch Minus

Length: 175 feet

Width: 15 feet

Depth: 2 inch

Volume: 16.20 cubic yards

Amount: 22.69 tons (1.4 conversion rate)

Upper Seminole Well Field Road Repairs

Site 4d: Pad Near Utility Poles #33 and #34

Location: 42.003334 -91.735587

Base Material: Possibly 2 inch Clean

Length: 50 feet

Width: 15 feet

Depth: 2 inch

Volume: 4.63 cubic yards

Amount: 6.48 tons (1.4 conversion rate)

Surface Material: Possibly 2 inch Minus

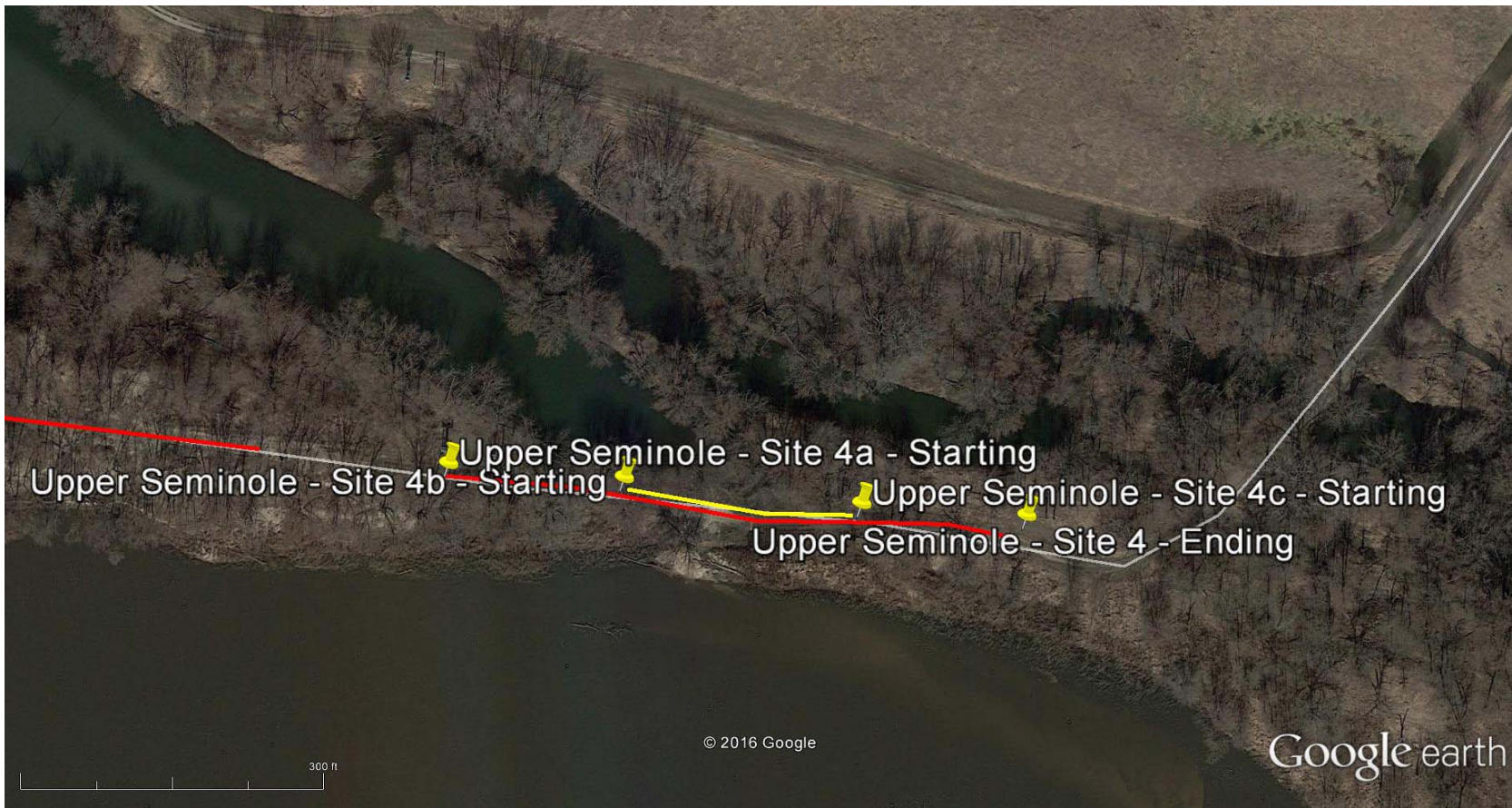
Length: 50 feet

Width: 15 feet

Depth: 2 inch

Volume: 4.63 cubic yards

Amount: 6.48 tons (1.4 conversion rate)



Upper Seminole Well Field Road Repairs

Site 5: Gravel Road in the Well Field
Damage: Water Division asserts that road stone was scoured during the flood
Starting: 42.003735 -91.735580
Ending: 42.003807 -91.735511

Base Material: Possibly 4 inch Clean
Length: 50 feet
Width: 15 feet
Depth: 4 inch
Volume: 9.26 cubic yards
Amount: 12.96 tons (1.4 conversion rate)

Surface Material: Possibly 2 inch Minus
Length: 50 feet
Width: 15 feet
Depth: 2 inch
Volume: 4.63 cubic yards
Amount: 6.48 tons (1.4 conversion rate)



Upper Seminole Well Field Road Repairs

Site 6: Aged Asphalt / Chip and Seal Entrance Road to Well Field through Park Property
Damage: Water Division anticipates that this road will be heavily damaged due to gravel truck and other equipment traffic while completing well field road repairs
Starting: 42.003265 -91.728279
Ending: 42.00367 -91.732628
Length: 1320 feet (0.25 mile)
Width: 30 feet
Depth: Chip and Seal



Lower West Well Field Road Repairs

Site 1: Gravel Road in the Well Field

Damage: Water Division asserts that road stone was scoured during the flood and when sand was cleared from the roadway last fall, and the Water Division anticipates that this road will be heavily damaged due to gravel truck and other equipment traffic when the sand along the side of the roadway is removed

Starting: 42.007905 -91.69776 Approximate location

Ending: 42.010139 -91.703117 Near Well #6 Turn Around

Base Material: Possibly 2 inch Clean

Length: 1380 feet - Estimated Repairs

Width: 15 feet - Estimated Repairs

Depth: 2 inch - Estimated Repairs

Volume: 127.78 cubic yards

Amount: 178.89 tons (1.4 conversion rate)

Base Material: Possibly 4 inch Clean

Length: 400 feet - Estimated Repairs

Width: 15 feet - Estimated Repairs

Depth: 2 inch - Estimated Repairs

Volume: 37.04 cubic yards

Amount: 51.85 tons (1.4 conversion rate)

Surface Material: Possibly 2 inch Minus

Length: 1780 feet - Estimated Repairs

Width: 15 feet - Estimated Repairs

Depth: 2 inch - Estimated Repairs

Volume: 164.81 cubic yards

Amount: 230.74 tons (1.4 conversion rate)

